



Power Door Products

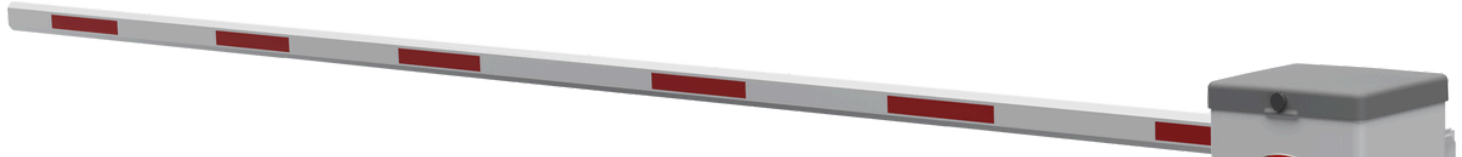
(914) 698-5083

www.PowerDoorProducts.com



# MAGNA Q

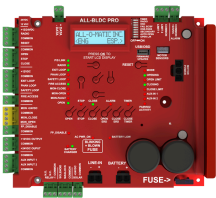
## BARRIER ARM OPERATOR



**GREATNESS!** SIMPLIFIED.

The **MAGNA Q** Barrier Arm Operator is the latest innovation in parking control, combining exceptional performance with cutting-edge technology. Engineered for reliability, ease of use and low maintenance, MAGNA Q offers unparalleled features and specifications, making it the ideal solution for various applications.

## FEATURES



**ALL-BLDC PRO**

### Advanced Controller

ALL-BLDC PRO controller with an LCD display, onboard diagnostics, USB export for diagnostics data, and field firmware update capabilities

### Flexible Configuration

Standard right- or left-hand operation set via DIP-SWITCH

### High-Efficiency Motor

Brushless DC motor ensures smooth operation, enhanced efficiency, and long-lasting reliability

### Self-Adjustment speed

Operator will self-adjust the speed to smoothly operate different length arms

### Manual Operation

Spindle manual release allows easy movement of the arm up or down

### Damage Reduction

Standard break-away mechanism minimizes damage to the arms

### Optimized Transportation

Standard sectional arms reduce shipping damage and save on freight costs

### Battery Backup

Built-in battery backup provides up to 350 cycles on 15' arms

### Low Maintenance

Simpler, no springs or counterweights design, reducing maintenance needs

### USB Port

Ability to export diagnostics DATA and firmware updates

### Vehicle Counter

Keeps a log of accurate vehicle count

### Convenience Outlet

Built-in 120VAC outlet for added functionality.

### Warranty

10 years on aluminum cabinet, 3 years electrical and mechanical components



RESIDENTIAL



COMMERCIAL



INDUSTRIAL

SCAN FOR PRODUCT INFORMATION



**SLIDERS | SWINGERS | OVERHEADS | BARRIER ARMS**

The standard by which all other automatic gate operators are measured

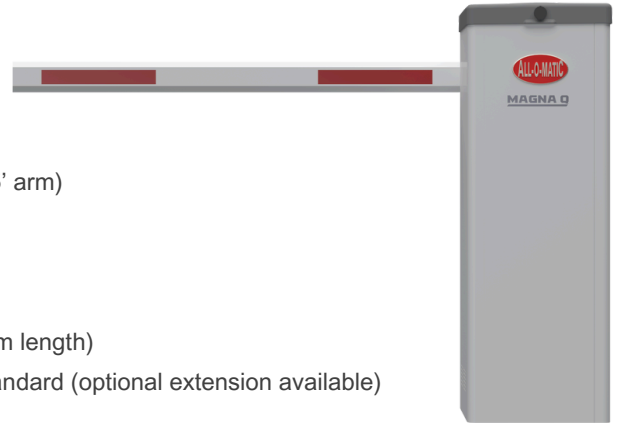


# MAGNA Q

## BARRIER ARM OPERATOR

### SPECIFICATIONS

<b>Power Options</b>	120VAC, 208/240VAC (1PH), and 24VDC solar
<b>Battery</b>	Two 7Ahr, 12V batteries (up to 350 cycles with a 15' arm)
<b>Motor</b>	24VDC BLDC
<b>Operating Voltage</b>	24VDC
<b>Accessory Power</b>	0.5A at 12VDC and 0.5A at 24VDC
<b>Arm Speed</b>	90° movement takes 2.5–4.5 seconds (varies by arm length)
<b>Arm Length</b>	Two-piece octagonal aluminum extrusion, 15'-7" standard (optional extension available)
<b>Cabinet Dimensions</b>	11" x 14" x 42"
<b>Weight</b>	120 lbs (without the arm)
<b>Cabinet Material</b>	6061 aluminum extrusion panels (powder-coated) with PA-765A UV-resistant hood
<b>Duty Cycle</b>	Continuous
<b>Mechanical Release</b>	Spindle crank for manual arm movement



### OPTIONS

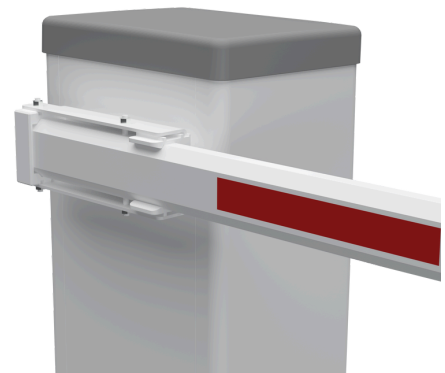
Reduces costly repairs

<b>Arm Extension</b>	49" extension to increase total arm length to 19'-8"
<b>Folding Arm</b>	Folding arm hardware (main arm length must be specified)
<b>Edge Sensor</b>	Available for both 15'-7" and 19'-8" arms (compact and sleek edge)
<b>LED Strip</b>	Optional LED strip for 15'-7" or 19'-8" arms (compact and sleek strips)

### SUGGESTED ACCESSORIES

- ✓ Reduces Costs
- ✓ Enhances Safety
- ✓ Minimizes Downtime & Repairs

<b>AOM PRIME VD1</b>	Plug-in loop detector
<b>AOM-RED EYE 2 Kit</b>	Retro-reflective photo eye
<b>ARM LED Strip</b>	Available for 15'-7" and 19'-8" arms
<b>Folding Arm Hardware</b>	For customized installation
<b>Edge Sensor</b>	Available for 15'-7" and 19'-8" arms
<b>Solar Panels</b>	55W, 24VDC panels



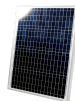
**BREAKAWAY ARM**



**PRIME VD-1**  
Loop Detector



**AOM-RED EYE**  
INCLUDED



**24V**  
Solar Panel



RESIDENTIAL



COMMERCIAL



INDUSTRIAL

The Warrantor warrants the MAGNA Q Barrier Arm Operator. ALL-O-MATIC INC warrants the MAGNA Q for a period of ten (10) years on the extrusion aluminum cabinet panels, and for a period of three (3) years on electrical and mechanical components from defects in circuitry, motor, gear box and workmanship. This warranty applies from the date of purchase to the original owner. Warrantor will repair or, at its option, replace any device which it finds to require service. This device must be sent to the warrantor at the consumer's expense. The warrantor will return the repaired or replaced unit to the customer at the consumer's expense. Labor charges for dealer service or replacement are the responsibility of the owner. These warranties are in lieu of all other warranties either expressed or implied, and ALL-O-MATIC INC shall not be liable for consequential damage. All implied warranties of merchantability and or fitness for a particular purpose are hereby disclaimed and excluded. This limitation is not valid in jurisdictions which do not allow limitation of incidental or consequential damages or limitation of warranty periods. Caution in order to obtain this policy, please complete the registration card and send it by mail within 30 days of purchasing from ALL-O-MATIC INC. or your INSTALLER. If not registered only a one year warranty on all parts will be provided.